



**FEDNAV**

NAVIGATING COMPLEXITY  
NAVIGUER DANS UN MONDE COMPLEXE

# SHIPPING THROUGH THE CANADIAN ARCTIC

## Summer 2020

**Annika Ogilvie** | Ice and Remote Sensing Analyst

29/10/2020



# **ARCTIC OPERATIONS**



# **MV ARCTIC AND MV NUNAVIK AT DECEPTION BAY**





# MV UMIAK I AT VOISEY'S BAY

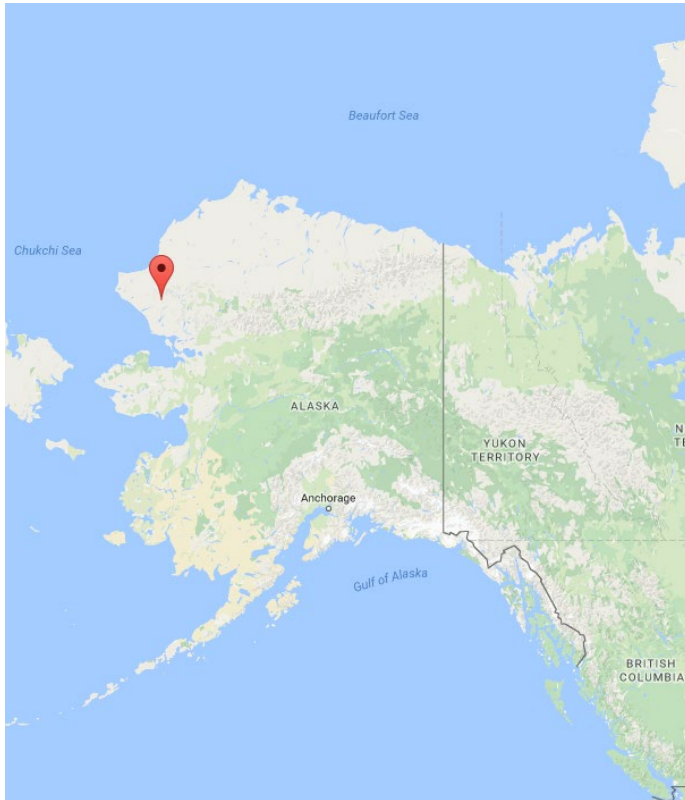




# BAFFINLAND



# RED DOG



# ICE SERVICES





# ICE SERVICES: EXPERTS IN SEA ICE AND REMOTE SENSING

1. Specialists in ice analysis and ice-related navigation information
2. Our mandates:
  - ≡ Ice monitoring and operational support
  - ≡ Ice studies for future shipping projects
  - ≡ Research and development
  - ≡ IceNav





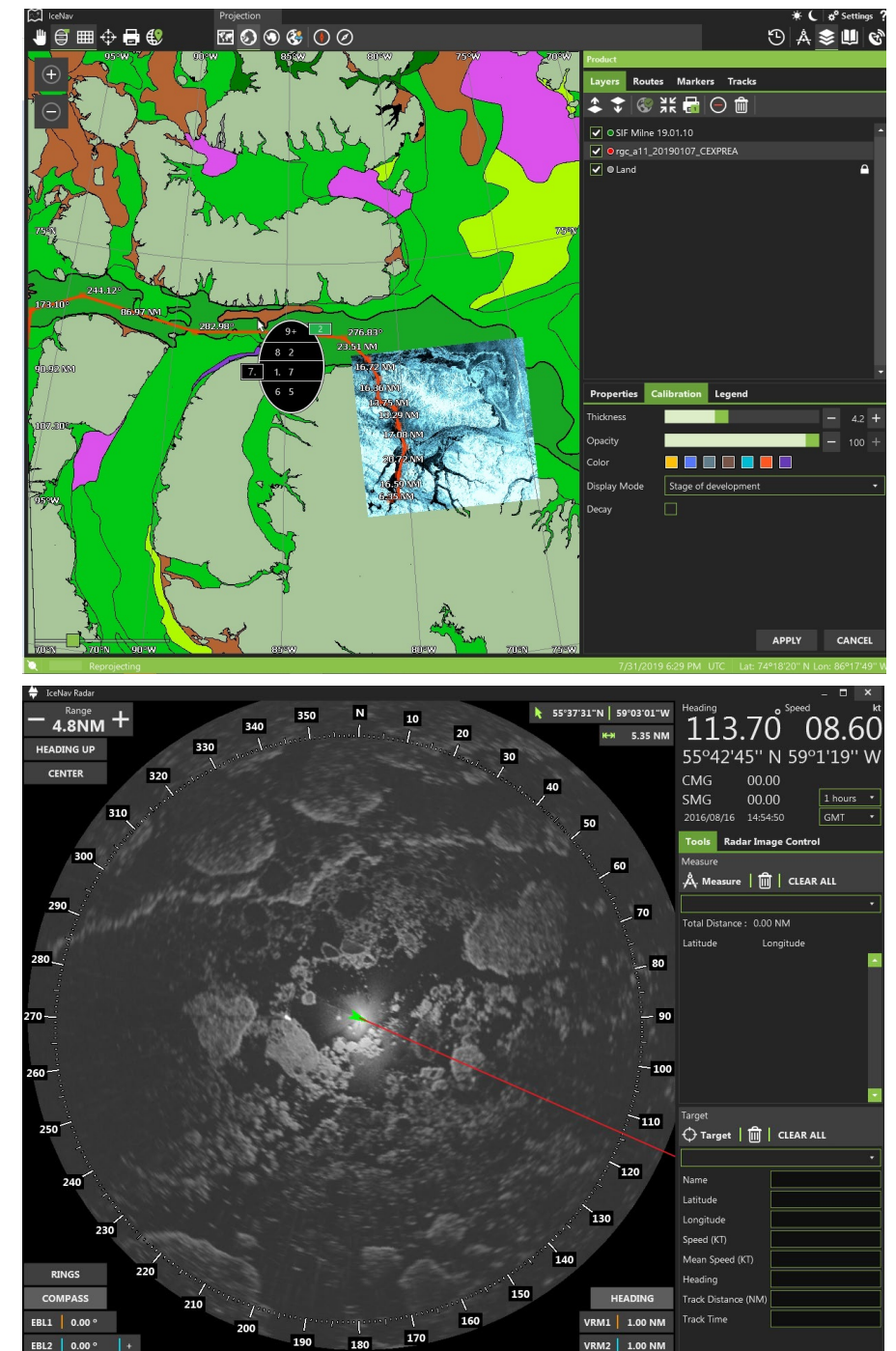
# **SUPPORT TO OUR ICEBREAKERS**



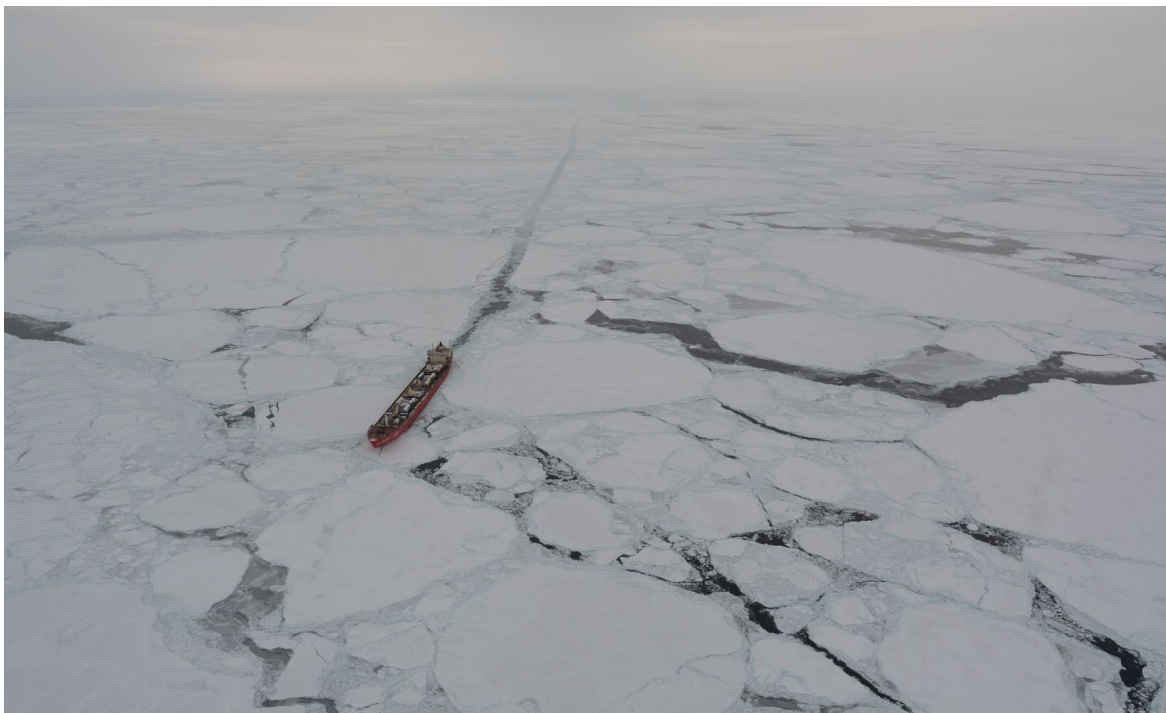
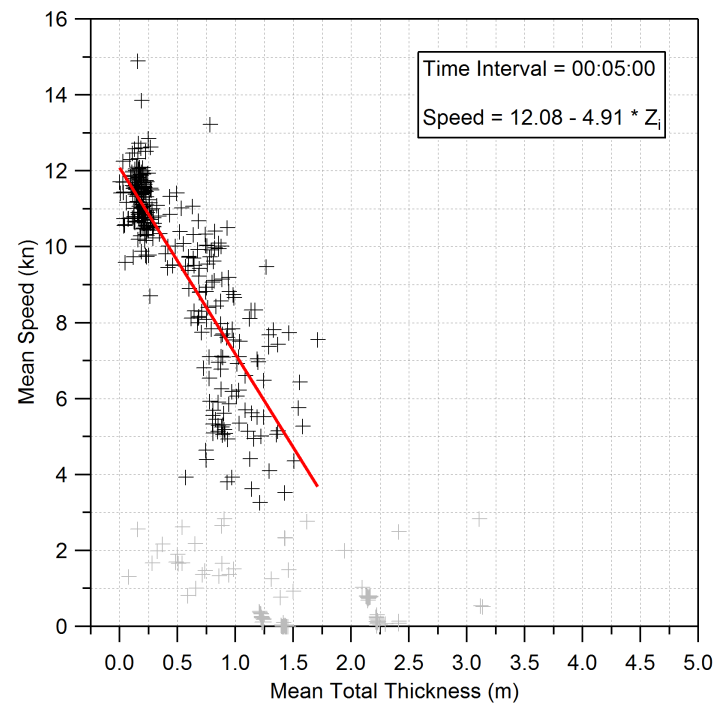


IceNav is a shipboard navigation system, designed for vessels operating in ice-covered waters worldwide

- ≡ Initially created in the mid 1990's to fulfill the needs of Fednav's Arctic operations
- ≡ Now a commercial product that has been completely redeveloped in recent years
- ≡ Used on cruise ships, icebreakers, Coast Guard icebreaker, cargo vessels, and as a shore-based tool for operations support



# RESEARCH



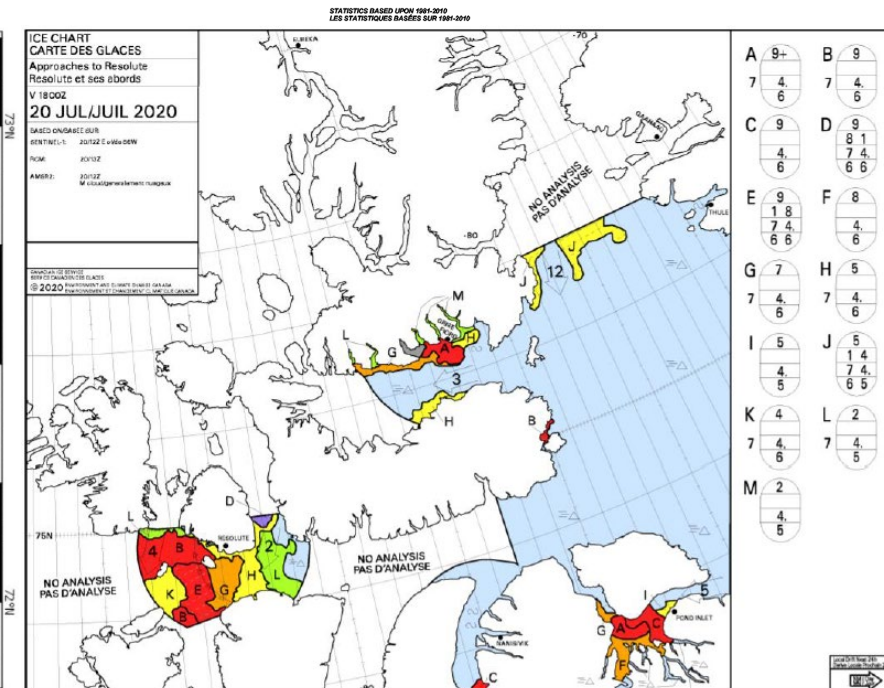
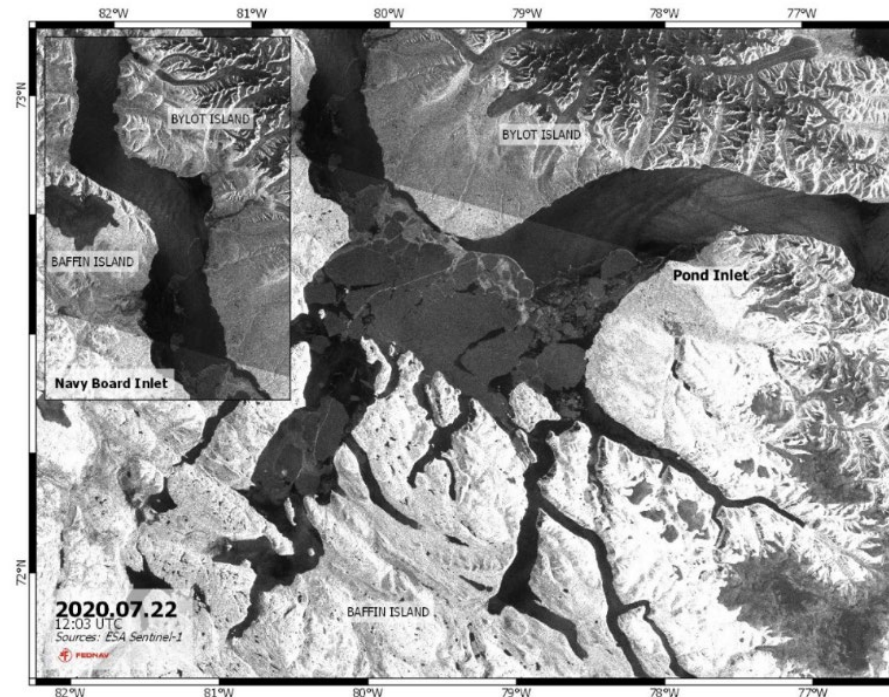
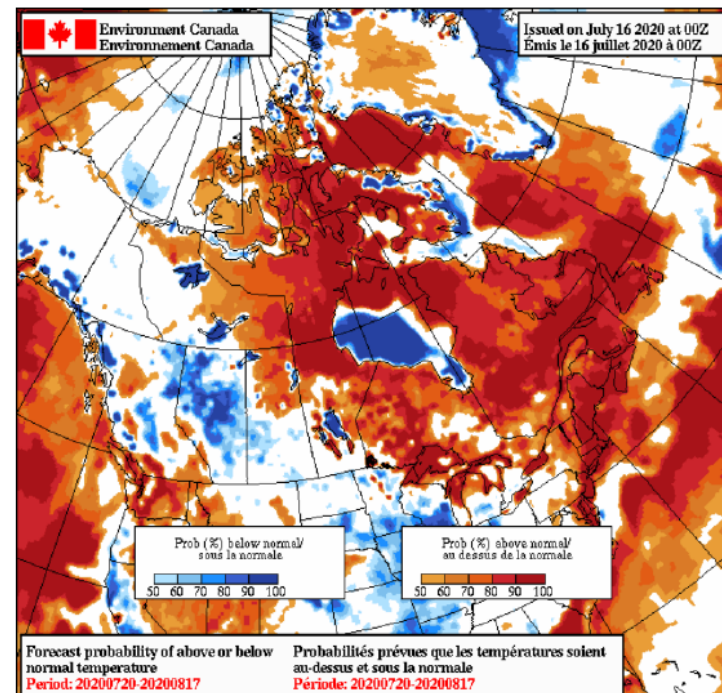
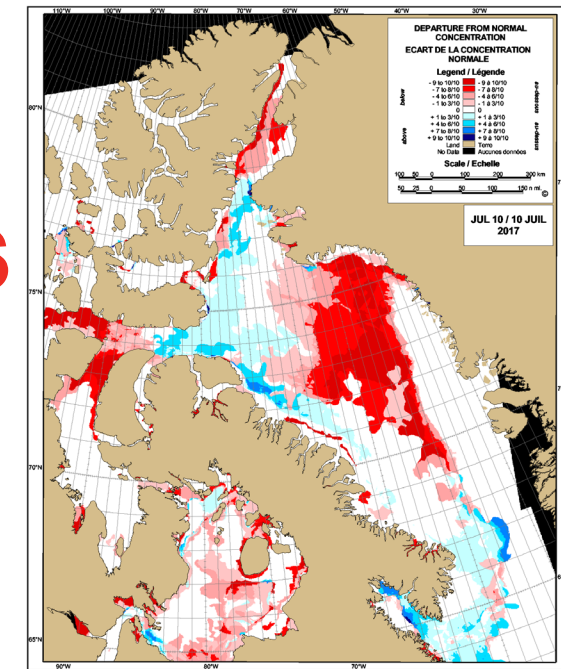


# **SUPPORT TO SUMMER OPERATIONS**



# SEASONAL FORECASTING OUTLOOKS

- ≡ Current and recent conditions (trends and anomalies)
- ≡ Forecasts of ice conditions
- ≡ Forecasts of air temperatures and winds
- ≡ AIRSS/POLARIS regulations and ship ice class taken into consideration

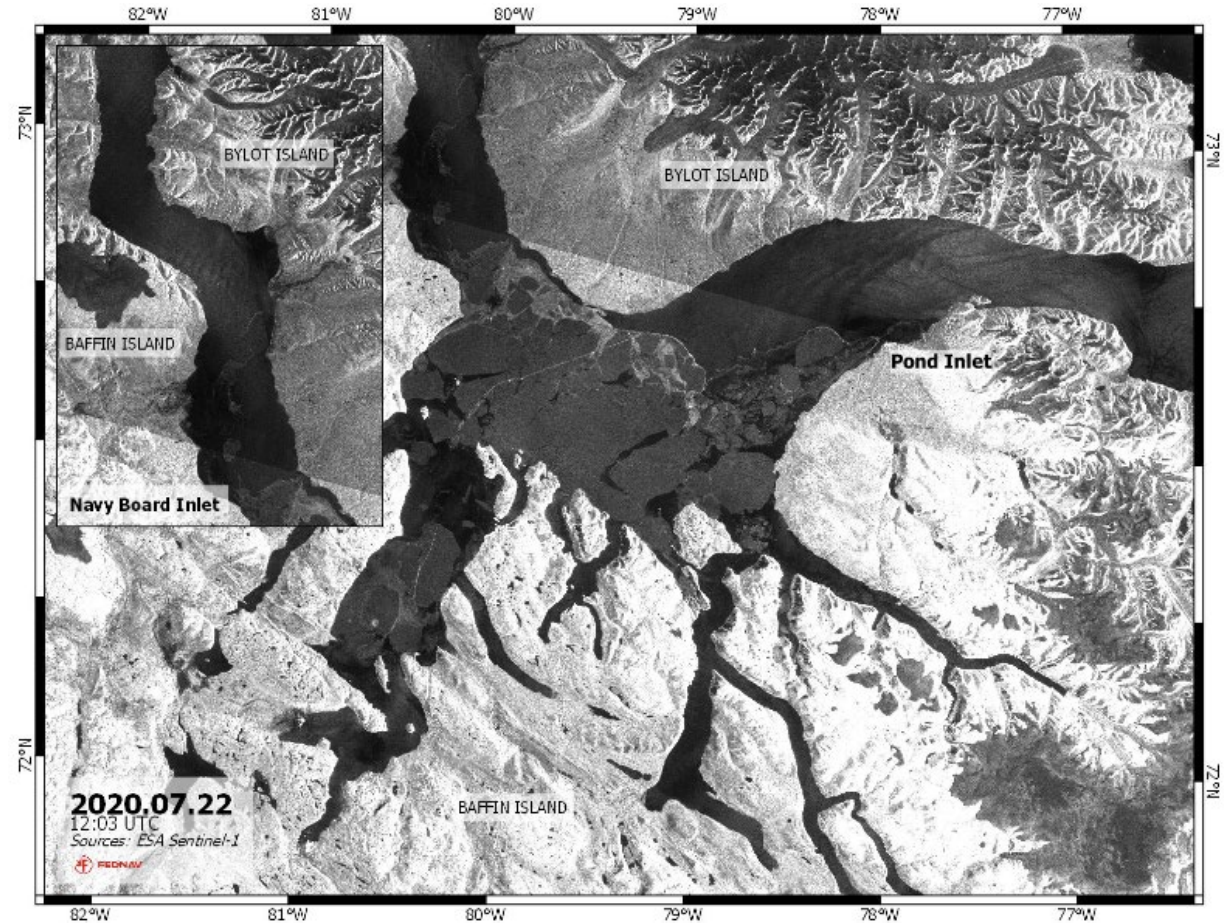
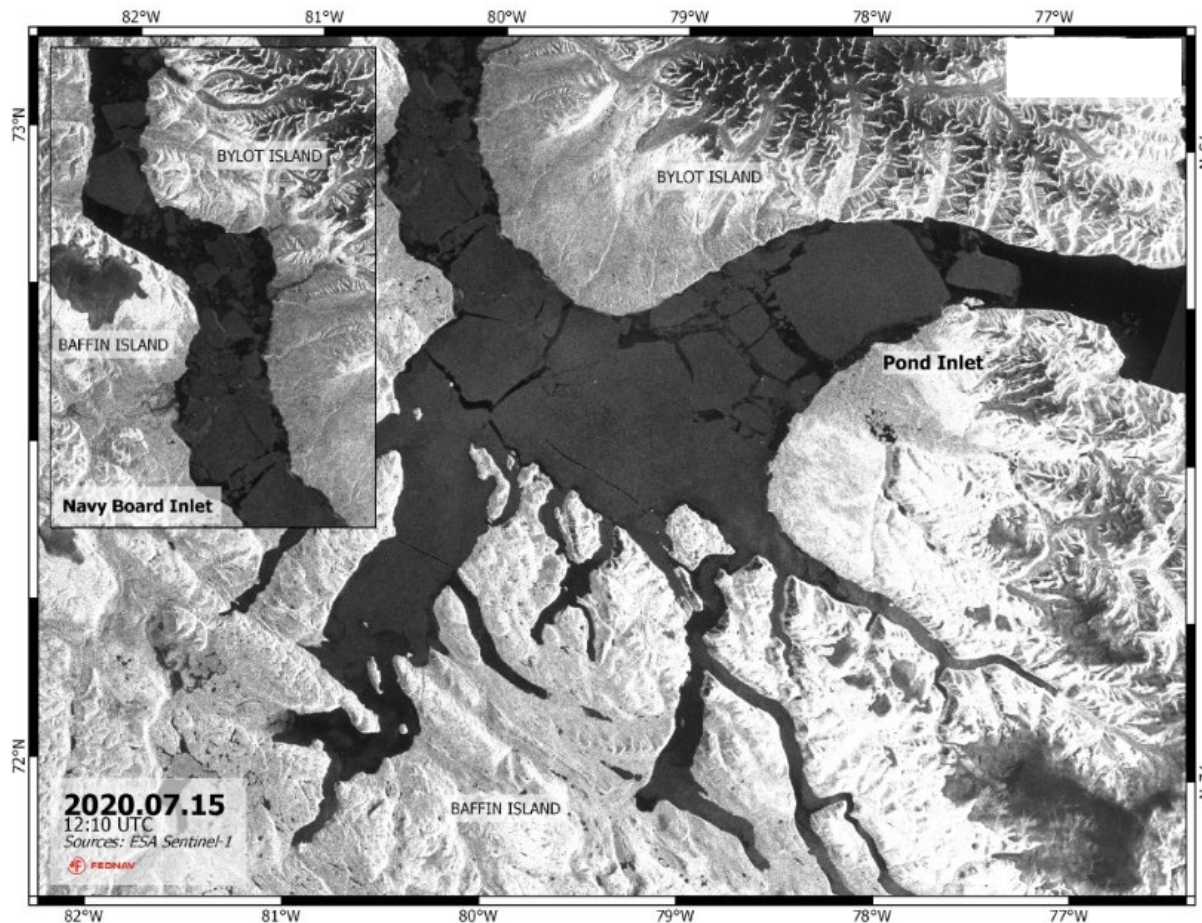


**SUMMER 2020**



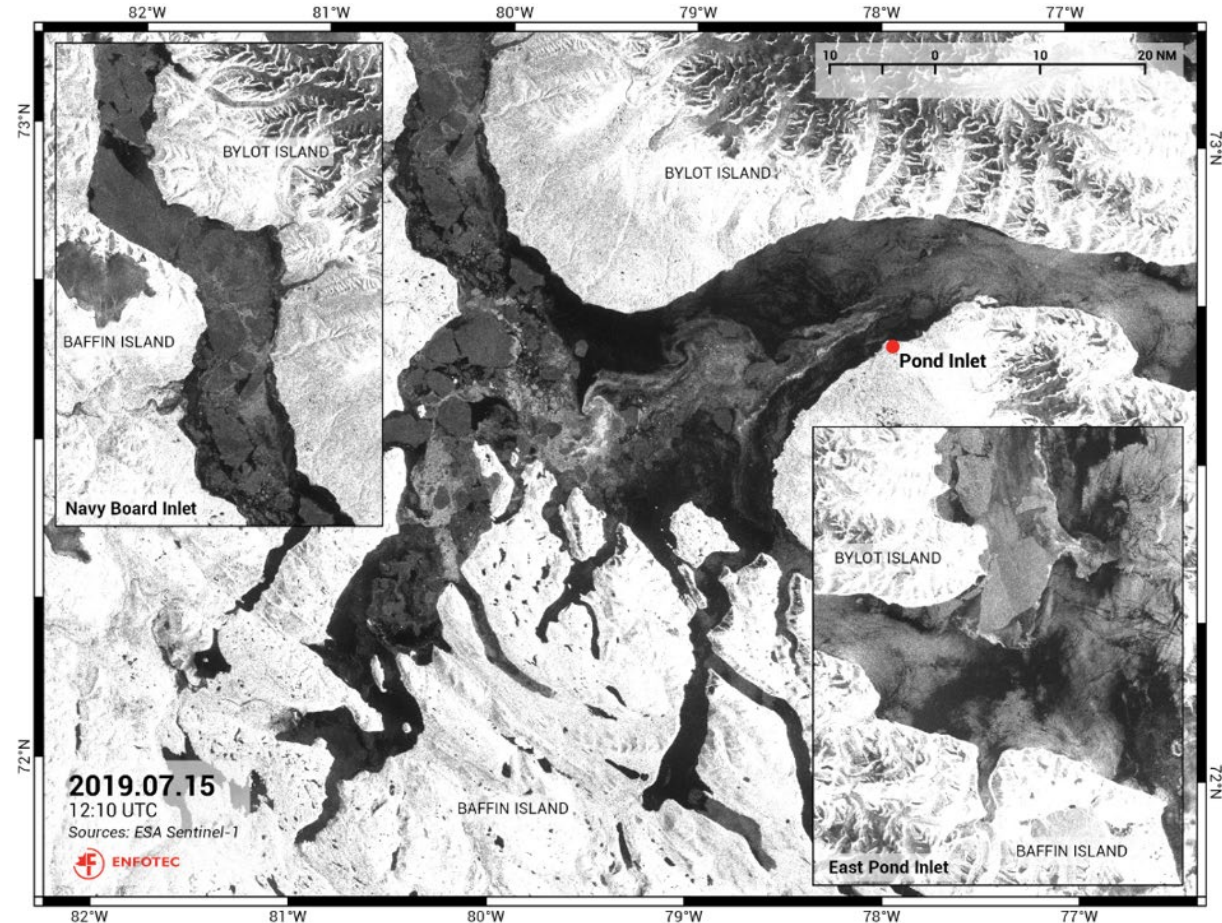
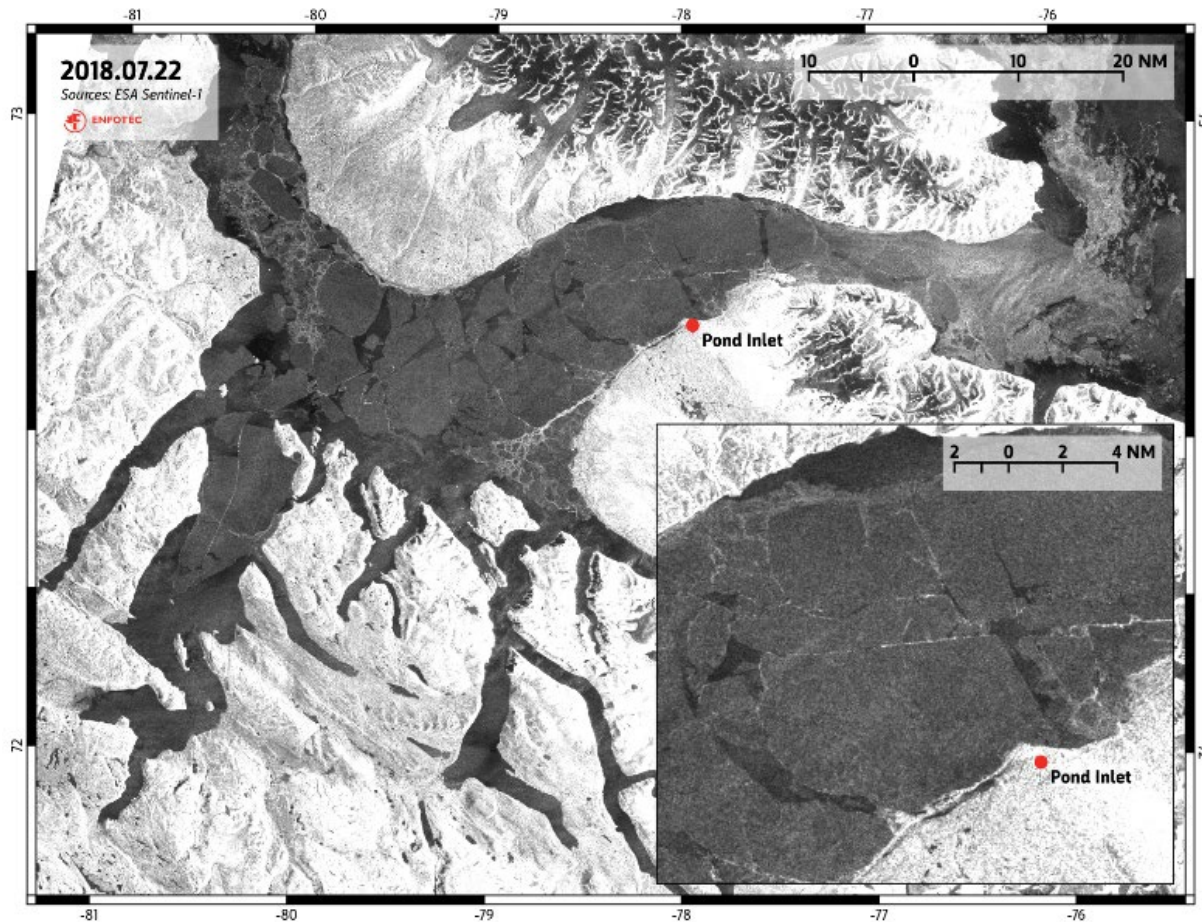


# SEA ICE BREAK UP NEAR POND INLET 2020





# SEA ICE BREAK UP NEAR POND INLET 2019/18



**FALL 2020**





# DELAYED FREEZE UP NEAR POND INLET 2020

